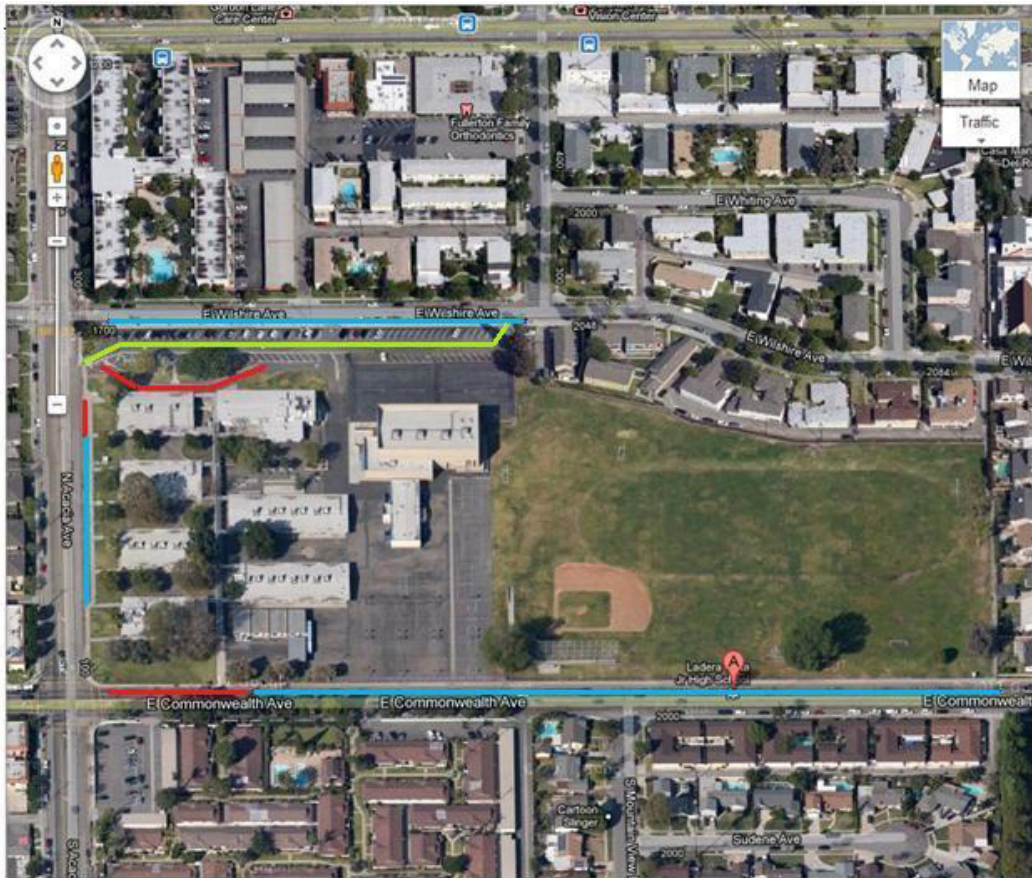


# Ladera Vista Junior High Drop-Off and Pick-Up Guidelines

Brought to you by the Ladera Vista Junior High PTSA



With close to 1000 students, traffic around the campus can get snarled pretty easily. Want to avoid the rush? Pick up your student about 15 minutes after release. (He/She can wait in front of the office and can see you when you drive through the parking lot!)

1. The zones marked in **red** are for bus traffic or are "No Stopping Anytime."
2. The zones marked in **blue** are for student drop off and pick up only. There are two pedestrian gates adjacent to the field along Commonwealth that remain open at all times. It is permitted to drop off or pick up your student in the bus zone in the area south of the LV marquee. However, do not leave your vehicle unattended at these times! **It is illegal to double or triple park in this area and the police do and will issue citations for this!**
3. Parents may park in the school parking lot but students must walk on sidewalks or school pathways to get to the automobiles. (see **green** zone)
4. Wednesdays are street sweeping days. **Any car parked on Acacia, Wilshire or Commonwealth between 8 am and noon will be issued a citation.** It is allowable to drop off your students temporarily if you remain in your car.
5. Although it is legal to make a u turn on Acacia across the double yellow line in front of the bus zone, it is very strongly discouraged by the Fullerton Police for safety and traffic flow reasons. They encourage all parents to use the intersections only for our u turns.